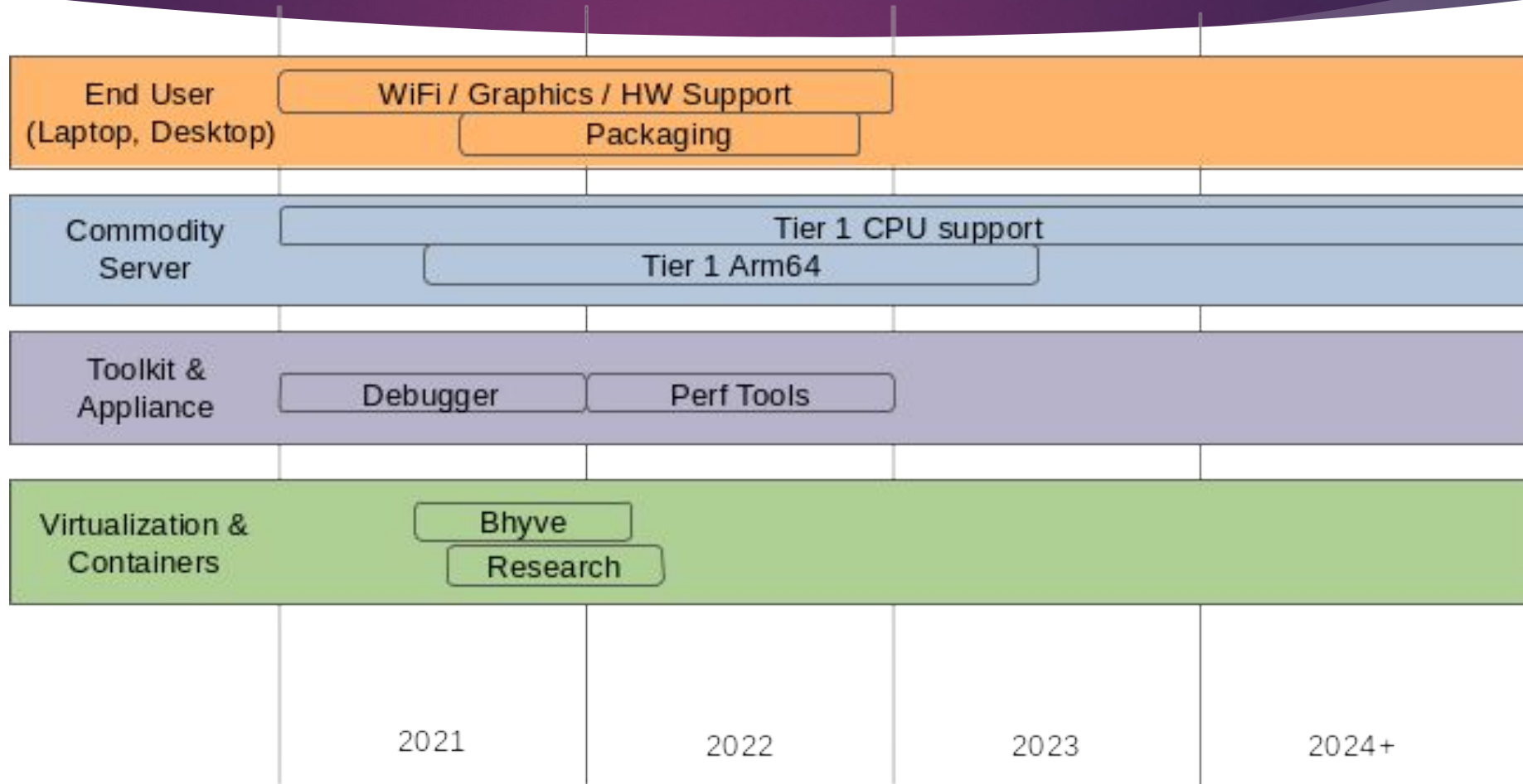




Technology Group Roadmap  
BSDCan 2023 Developer Summit



# Roadmap Focus Areas (2021)



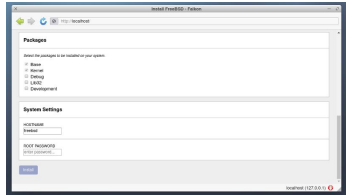
# Roadmap - (Nearly) Complete



- Intel iwlwifi
- Other wifi (Realtek rtw88/rtw89)
- LinuxKPI



- Arm support
- Security improvements



- Installer prototype



- LLDB improvements (GCC parity)
- Kernel debugging



- Achieved Tier-1 status
- Stability improvements, ISA support



- Vulnerability mitigations
- Security Team Operational support



- Tier-1 CPU support

# Roadmap - Outstanding



- Bug fixes, HT/VHT/.ac/.ax



- BSD LinuxKPI



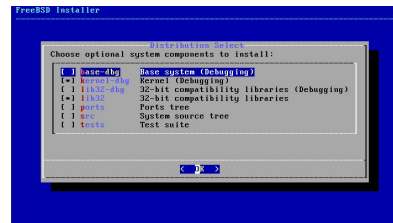
- Package base



- Developer Search



- Overlay filesystem support
- OCI stack



- Graphical desktop installation
- User-friendly installer
- Automation

# Roadmap - Outstanding



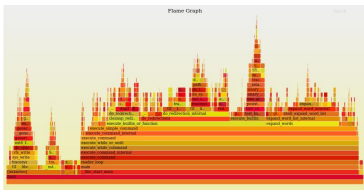
- RAID-Z ZFS expansion



- CI & Release Artifacts



- Proactive security

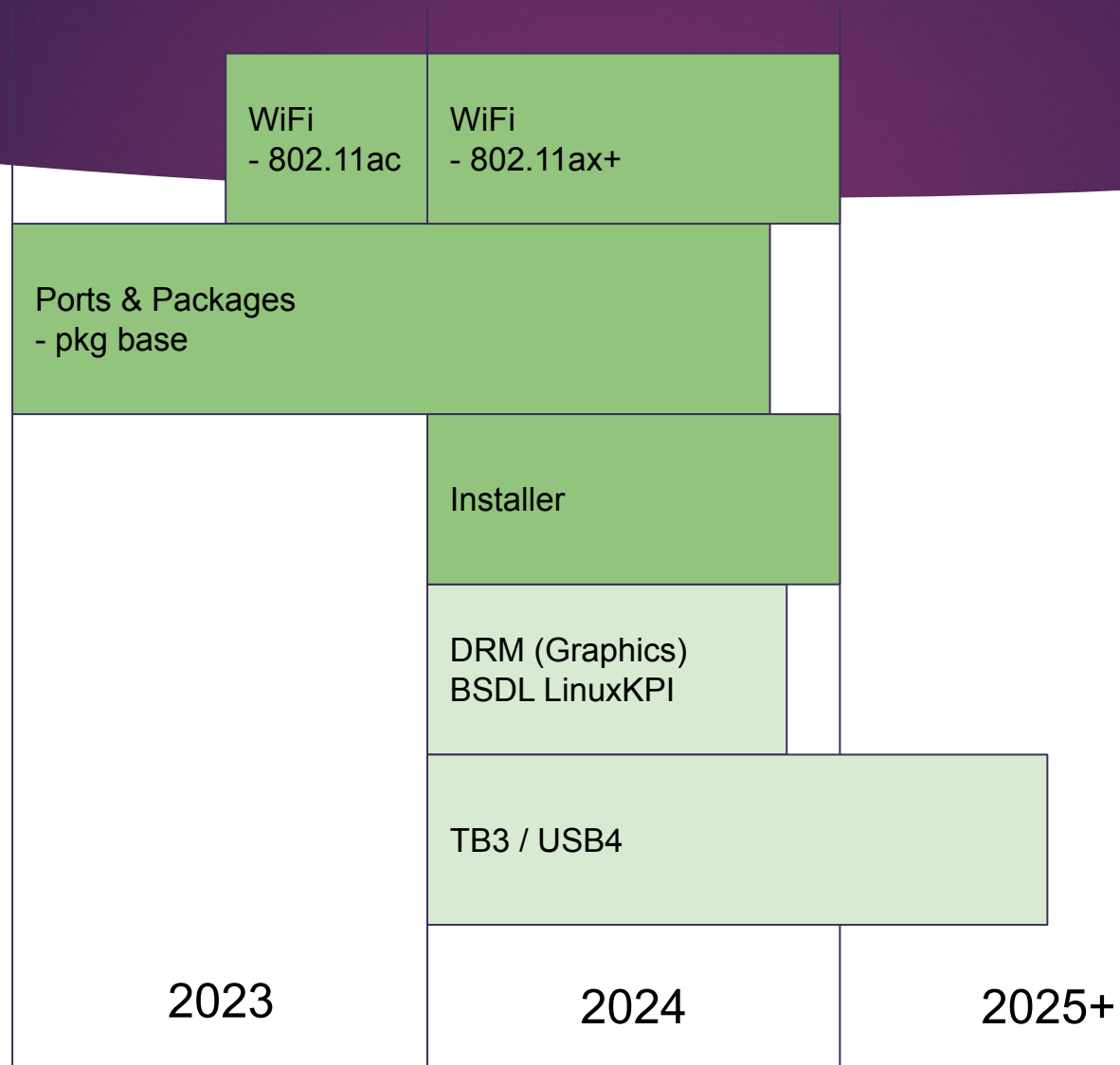


- Performance & Profiling



- VM Scalability

# Roadmap - End User (Desktop & Laptop)



# Roadmap - Commodity Server

Tier 1 CPU support, including release support

Arm64 as  
Tier 1

Proactive Security

CI & Release Artifacts

VM scalability

2023

2024

2025+



# Roadmap - Toolkit & Appliance

Debugger

Performance Tooling

2023

2024

2025+





# Roadmap - Containers & Virtualization



2023

2024

2025+